










lesson 11

NOTES AND RESTS


There are various kinds of NOTES designed to show the duration or time value of a musical sound. RESTS are symbols indicating a definite duration or time value of silence.

WHOLE NOTE..... 	=	 WHOLE REST
(Semi-breve)			
HALF NOTE..... 	=	 HALF REST
(Minim)			
QUARTER NOTE ... 	=	 QUARTER REST
(Crotchet)			
EIGHTH NOTE..... 	=	 EIGHTH REST
(Quaver)			


One whole note equals two half notes







One half note equals two quarter notes







One quarter note equals two eighth notes




Identify the following notes and rests.

1. 
2. 
3. 
4. 

5. 
6. 
7. 
8. 

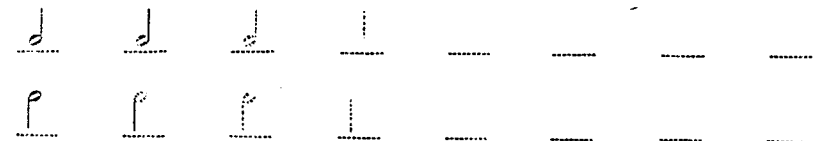
lesson 12

WRITING PRACTICE—NOTES

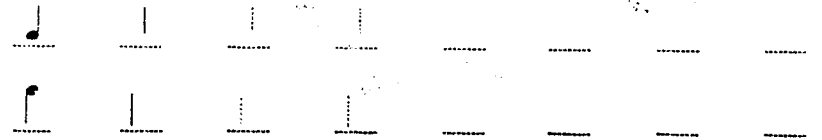
Draw Whole Notes



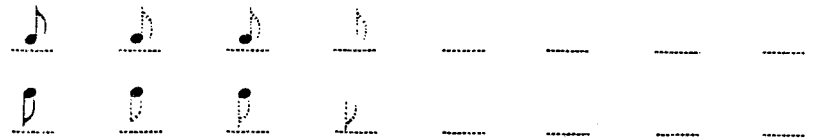
Draw Half Notes



Draw Quarter Notes



Draw Eighth Notes



Draw Beamed Eighth Notes

